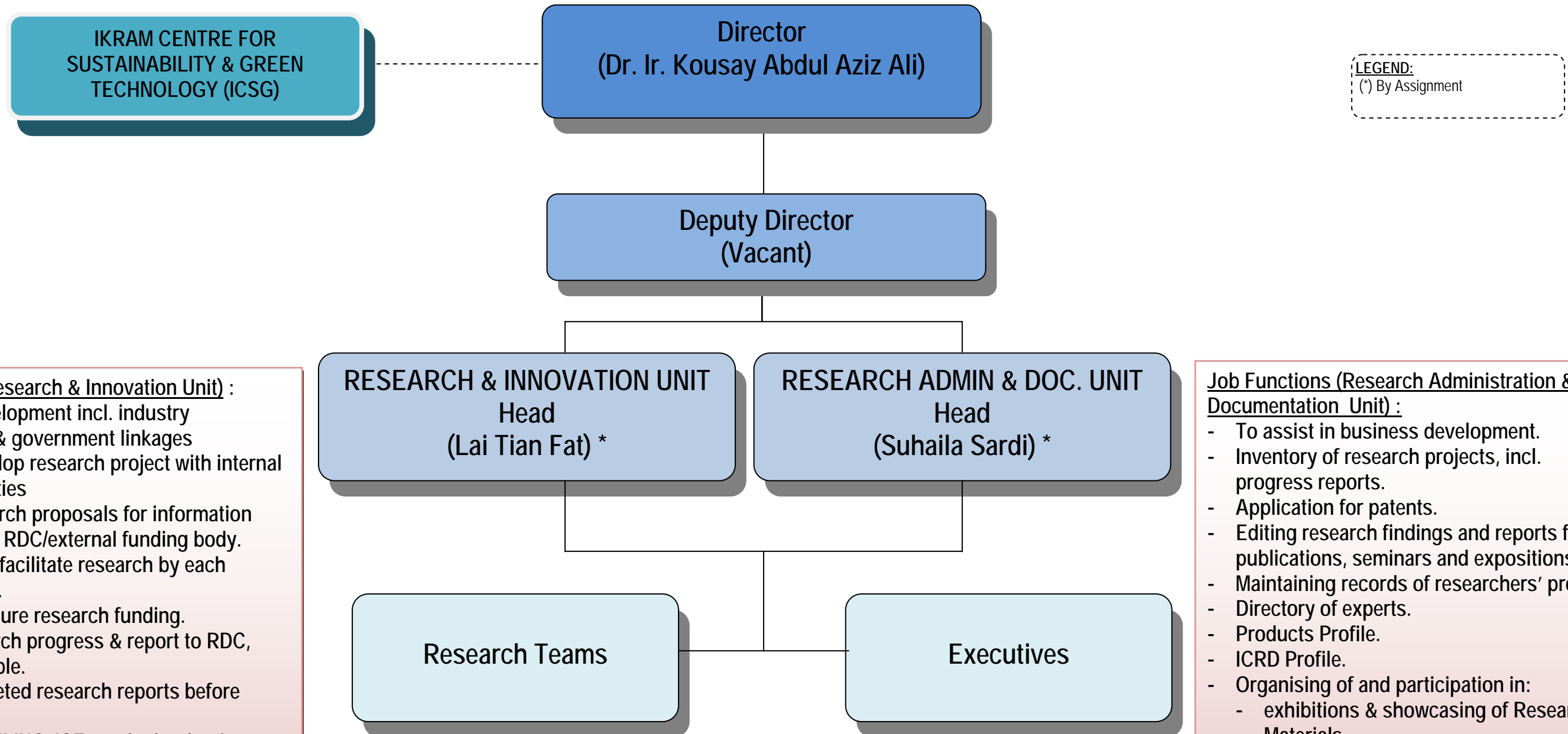


MANAGEMENT STRUCTURE IKRAM CENTRE FOR RESEARCH & DEVELOPMENT (ICRD)



LEGEND:
(* By Assignment)

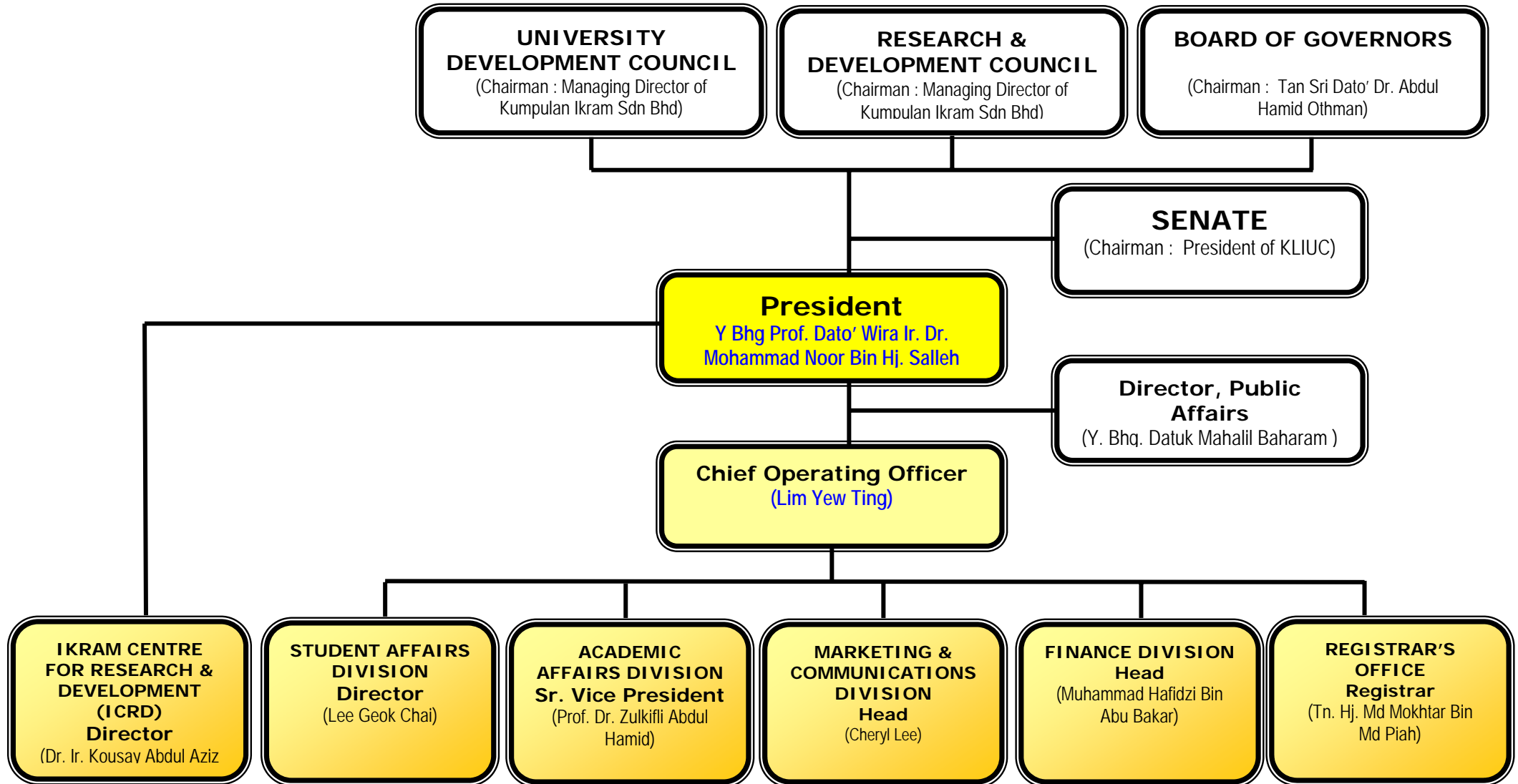
Job Functions (Research & Innovation Unit) :

- Business development incl. industry collaboration & government linkages
- Initiate & develop research project with internal & external parties
- Compile research proposals for information of/approval by RDC/external funding body.
- Co-ordinate & facilitate research by each research team.
- Propose & secure research funding.
- Monitor research progress & report to RDC, where applicable.
- Editing completed research reports before briefing RDC.
- Liaising with KLIUC, ICEs and other business units and external parties, where applicable.
- Explore potential for commercialization of research project.
- Recommending to RDC the provision of adequate infrastructure and facilities.
- Develop guidelines for researchers (staff of PB Group, KLIUC lecturers and students & external parties) subject for approval by RDC.

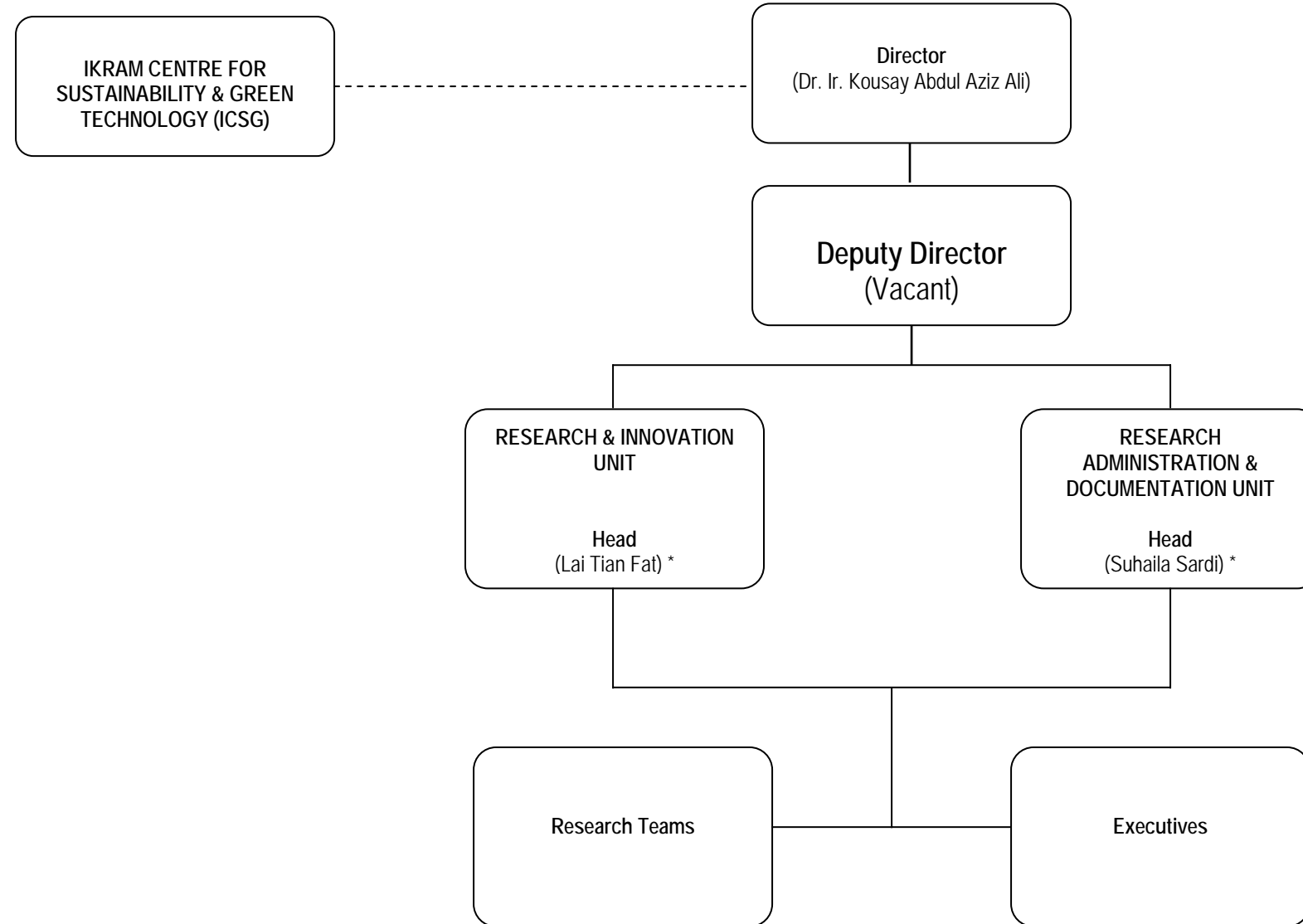
Job Functions (Research Administration & Documentation Unit) :

- To assist in business development.
- Inventory of research projects, incl. progress reports.
- Application for patents.
- Editing research findings and reports for publications, seminars and expositions.
- Maintaining records of researchers' profile.
- Directory of experts.
- Products Profile.
- ICRD Profile.
- Organising of and participation in:
 - exhibitions & showcasing of Research Materials
 - research competitions
- Website development & maintenance
- Data management
- Construct and update research management information database for researchers' use
- Procurement of research materials & equipment
- Annual report on research
- General administration

MANAGEMENT STRUCTURE OF



**MANAGEMENT STRUCTURE
IKRAM CENTRE FOR RESEARCH & DEVELOPMENT (ICRD)**



- Job Functions (Research & Innovation Unit) :**
- Business development incl. industry collaboration & government linkages
 - Initiate & develop research project with internal & external parties
 - Compile research proposals for information of/approval by RDC/external funding body.
 - Co-ordinate & facilitate research by each research team.
 - Propose & secure research funding.
 - Monitor research progress & report to RDC, where applicable.
 - Editing completed research reports before briefing RDC.
 - Liaising with KLIUC, ICES and other business units and external parties, where applicable.
 - Explore potential for commercialization of research project.
 - Recommending to RDC the provision of adequate infrastructure and facilities.
 - Develop guidelines for researchers (staff of PB Group, KLIUC lecturers and students & external parties) subject for approval by RDC.

- Job Functions (Research Administration & Documentation Unit) :**
- To assist in business development.
 - Inventory of research projects, incl. progress reports.
 - Application for patents.
 - Editing research findings and reports for publications, seminars and expositions.
 - Maintaining records of researchers' profile.
 - Directory of experts.
 - Products Profile.
 - ICRD Profile.
 - Organising of and participation in:
 - exhibitions & showcasing of Research Materials
 - research competitions
 - Website development & maintenance
 - Data management
 - Construct and update research management information database for researchers' use
 - Procurement of research materials & equipment
 - Annual report on research
 - General administration

LEGEND:
(*) By Assignment