



# **KUMPULAN IKRAM SDN BHD - A Strategic 2011**

21 December 2010

Dato Chong Ket Pen

# IKRAM GROUP

MD Office

Corporate Office

**Ikram Builder**

**Ikram Infrastructure Asset Management**

**Ikram Regional**

**Ikram Engineering Services & Consultancy**

**Ikram Overseas & Special Project**

**Ikram Education & Training**

**Property Development**

Contract & Procurement (C&P)

Project Management

Construction

Infra Asset Assessment

Infra Asset Rehabilitation, Operation & Maintenance

Capacity Building & Green Technology

Project & General Management

KISB (EAST)

KISB (NORTH)

KISB (SOUTH)

KISB (SARAWAK)

KISB (SABAH)

ICFC

ICES

IQA

ICSG

Ikram International S/B

Protasco Infra S/B

FNQ Advanced Materials S/B

KLIUC

ITIDI

ISRA

Protasco Land S/B

De Centrum Development S/B



**Ikram Group**

**Chairman**  
**Dato' Mohd Ibrahim Bin Mohd Nor**

**Managing Director**  
**Dato' Chong Ket Pen**

**MD Office**

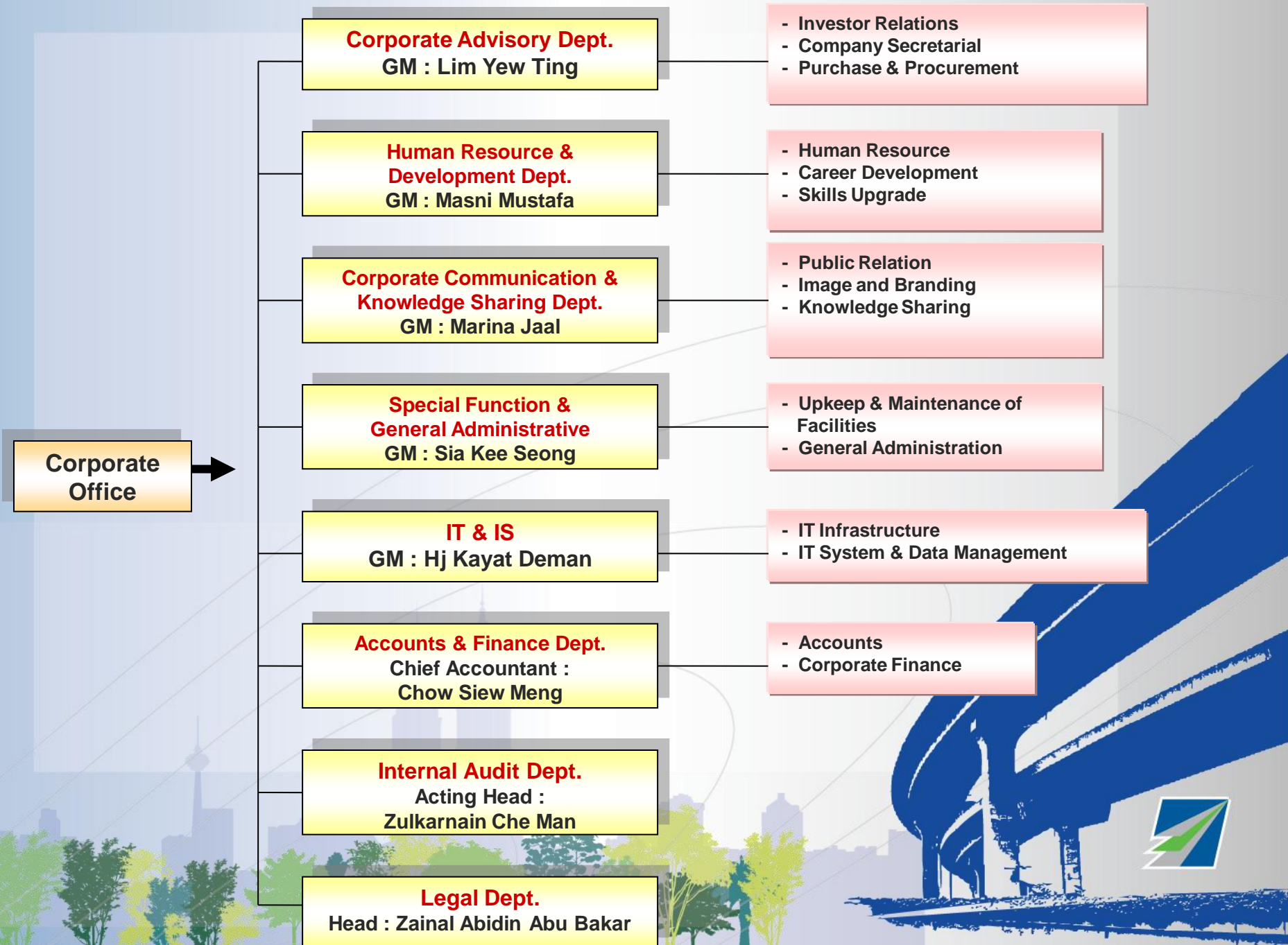
**Business Development**  
**Director : Hj. Ghazali Bin Hussin**

**Special Projects**  
**Director : Ooi In Ou**

**Special Assistant to Chairman**  
**Hamzah Bin Aziz**

**Secretary**  
**1. Chen Hui Jak**  
**2. April Liew**





# **Ikram Builder**

**Contract & Procurement**  
Head : Han Long Kong

**Construction**  
GM : Phoon Yoke Keong

**Project Management**  
Director : Kenny Chong Ther Nen  
GM : Abraham Chong



# **Ikram Infrastructure Asset Management**

**Inspection, Evaluation, Repair and  
Maintenance of Infrastructure Asset**

**Director  
Ir. Tan Swee Kee**

**Technical Director  
Ir. Dr. Ch'ng Guan Bee**

**Infra Asset  
Assessment Dept.  
(ICFC, ICES)\***

**Infra Asset Rehabilitation,  
Operation & Maintenance Dept.  
(KIP, KI Engineering, IB, SFGA)\***

**Capacity Building &  
Green Technology Dept.  
(Infotree/ITG/KLIUC/ICSG)\***

**Project & General  
Management Dept.**

**Building Unit  
Vong Kee Sin\***

**Road & Bridge Unit  
Hj. Mohd Zamri Hasan\***

**Slope Unit  
Ir. Sobri Aziz\***

**Special Infrastructure Unit**

**Rehabilitation Unit**

**Operation &  
Maintenance Unit  
Abraham Chong\***

**Asset Management  
System Unit**

**Training Unit**

**R & D Unit**

**Green Tech Unit**

**Project  
Implementation &  
Coordination Unit**

**Accounts &  
Finance Unit  
Aida Baba\***

**General Admin. Unit  
Nurzarinah  
Mohd Zakuan\***

**\* by assignment (based on project basis)**

# **Ikram Regional**

**Technical Advisor**  
**Ooi In Ou**

## **KISB (Eastern)**

**Director**  
**Ir. Mohamed Daud**

## **KISB (Northern)**

**Director**  
**Ir. Haji Azhari Hj. Abdullah**

## **KISB (Southern)**

**Director**  
**Mokhtar A Rashid**

## **KISB (Sarawak)**

**Executive Director**  
**Peter Wong Hung Huang**

**Senior Manager**  
**Kamaruddin Bin Zakaria**

## **KISB (Sabah)**

**Executive Director**  
**Vincent Tan Heng Kui**

**General Manager**  
**Hiew Yun Heng**



# **Ikram Engineering Services & Consultancy**

## **ICFC**

**Ikram Centre for  
Engineering Forensic &  
Consultancy Services**  
**Director**  
Dr. Ch'ng Guan Bee

## **ICES**

**Ikram Centre for  
Engineering Services**  
**Technical Adviser**  
Ooi In Ou

## **IQA**

**Ikram QA Services**  
**Director**  
Hj Yahya Ariffin

## **ICSG**

**Ikram Centre for  
Sustainability &  
Green Technology**  
**Director**  
Kenny Chong

**Geotechnique 1**  
**Technical Director**  
Ir. Sobri Aziz  
**Geotechnique 2**  
**Business Director**  
Jimjali Ahmed

**Highway &  
Transportation**  
**Business Director**  
Norazidah Taufek

**Civil & Structure**  
**Technical Director**  
Dr. Ch'ng Guan Bee

**Architecture &  
Built Environment**  
**Technical Director**  
Ar. Wong Soon Kuen

**Project Management**  
**General Manager**  
Ir Tan Kim Starr

**Geotechnical**  
**General Manager**  
Ir. Hj Abdul Ghani Shaaban

**Pavement**  
**General Manager**  
Hj. Muhammad Zamri Hasan



# **Ikram Overseas & Special Project**

## **Ikram International Sdn Bhd**

### **Directors**

**Jimjali Bin Ahmed  
Norazidah Binti Mohd Taufek  
Kenny Chong Ther Nen**

## **Protasco Infra Sdn Bhd**

**General Manager  
Abraham Chong**

## **FNQ Advanced Materials Sdn Bhd**

**Directors  
Dr. Ch'ng Guan Bee  
Ooi In Ou**



# **Ikram Education & Training**

**KLIUC**

**President**

**Dr. Zulkifli Abdul Hamid**

**ITIDI**

**CEO/Director**

**Ir. Tan Swee Kee**

**Deputy Director**

**Yahya Ahmad**

**ISRA**

**CEO**

**Ir. Tan Swee Kee**

**COO**

**Taufik Abd Rahim**



# Property Development

```
graph TD; A[Property Development] --> B[Protasco Land Sdn Bhd]; A --> C[De Centrum Development Sdn Bhd]; B --- D[Kenny Chong Ther Nen/Sia Kee Seong]; C --- E[Kenny Chong Ther Nen/Sia Kee Seong];
```

**Protasco Land Sdn Bhd**

**Kenny Chong Ther Nen/Sia Kee Seong**

**De Centrum Development Sdn Bhd**

**Kenny Chong Ther Nen/Sia Kee Seong**





**THANK YOU**

